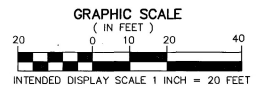
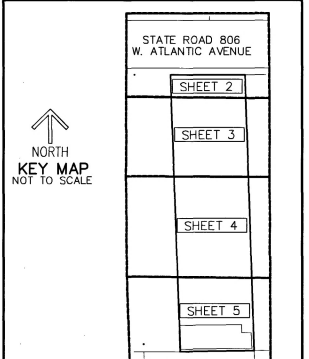
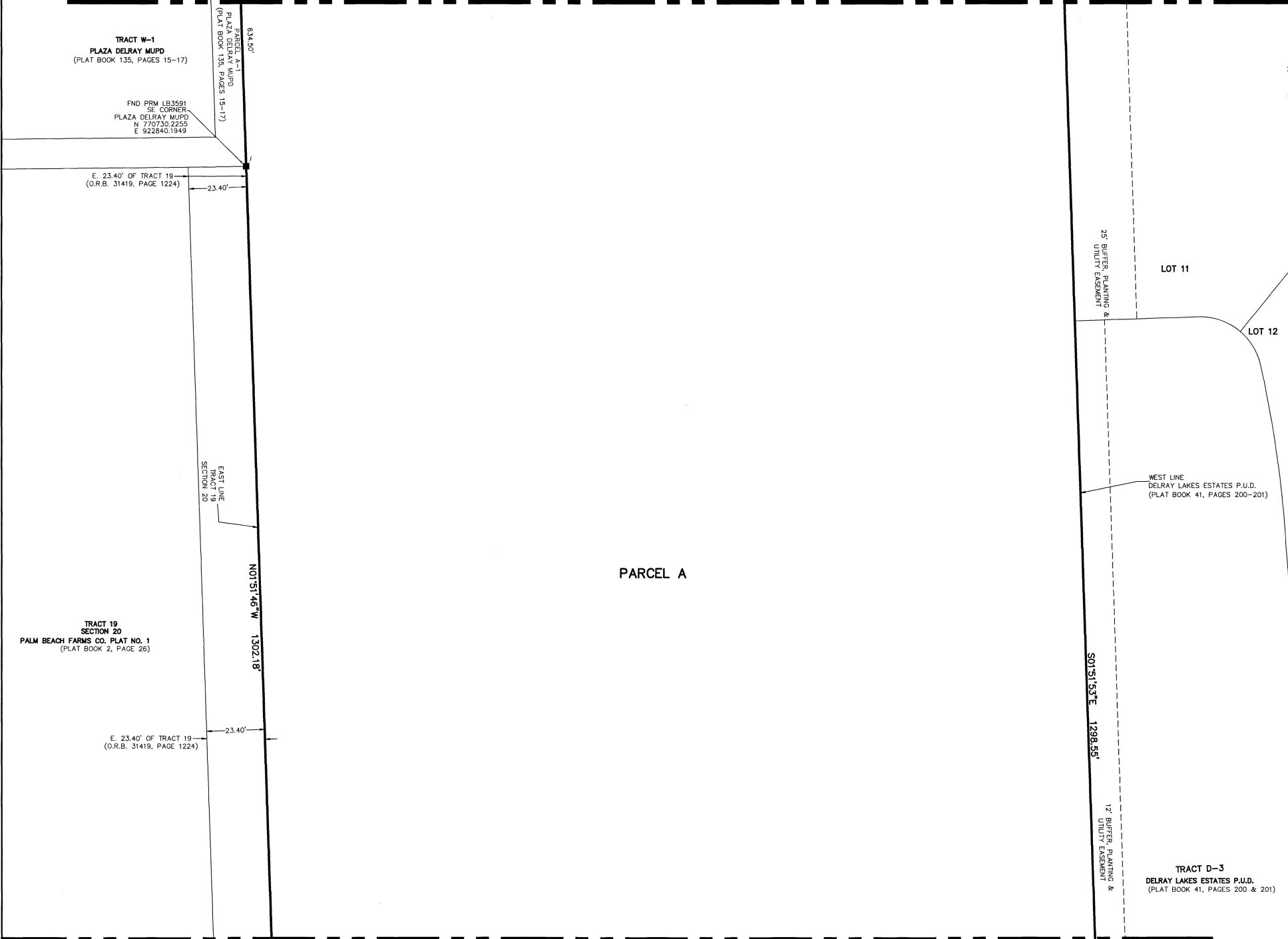


THIS INSTRUMENT PREPARED BY
 DAVID P. LINDLEY
 OF
CAULFIELD and WHEELER, INC.
 SURVEYORS - ENGINEERS - PLANNERS
 7900 GLADES ROAD, SUITE 100
 BOCA RATON, FLORIDA 33434 - (561)392-1991

MATCHLINE SEE SHEET 3



SHEET 4 OF 5



NOTES
COORDINATES, BEARINGS AND DISTANCES
 COORDINATES SHOWN ARE GRID
 DATUM = NAD 83 1990 ADJUSTMENT
 ZONE = FLORIDA EAST
 LINEAR UNIT = US SURVEY FEET
 COORDINATE SYSTEM 1983 STATE PLANE
 TRANSVERSE MERCATOR PROJECTION
 SCALE FACTOR = 1.000022084
 ALL DISTANCES ARE GROUND UNLESS OTHERWISE NOTED
 GROUND DISTANCE X SCALE FACTOR = GRID DISTANCE
 BEARINGS AS SHOWN HEREON ARE GRID DATUM,
 NAD 83 1990 ADJUSTMENT, FLORIDA EAST ZONE.

LEGEND / ABBREVIATIONS
 Δ - DELTA (CENTRAL ANGLE)
 CB - CHORD BEARING
 CD - CHORD DISTANCE
 E - EASTING (WHEN USED WITH COORDINATES)
 FPL - FLORIDA POWER & LIGHT COMPANY
 L - ARC LENGTH
 LB - LICENSED BUSINESS
 L.W.D.D. - LAKE WORTH DRAINAGE DISTRICT
 MUPD - MULTIPLE USE PLANNED DEVELOPMENT
 N - NORTHING (WHEN USED WITH COORDINATES)
 O.R.B. - OFFICIAL RECORD BOOK
 PBCUE - PALM BEACH COUNTY WATER UTILITIES DEPARTMENT EASEMENT
 R - RADIUS
 ■ PRM - DENOTES PERMANENT REFERENCE MONUMENT
 SET 4"x 4"x 24" CONCRETE MONUMENT WITH ALUMINUM DISK STAMPED "C&W PRM LB3591"
 UNLESS OTHERWISE NOTED
 ● PRM - DENOTES PERMANENT REFERENCE MONUMENT
 SET NAIL AND DISK STAMPED "C&W PRM LB3591"
 △ - DENOTES HORIZONTAL CONTROL POINT